



Ray of light series

Mediha Ting

定如淨

齊亮畫廊
BLINK GALLERY

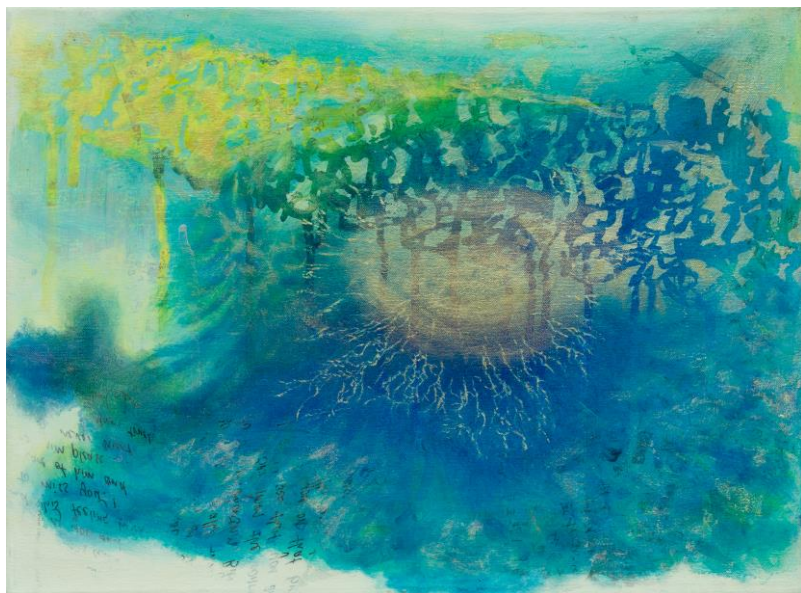
定如淨

比利時出生，香港長大，於美國及英國接受藝術教育，1995 年就讀美國加州藝術學院時，獲全美大學校際公開賽優異獎。2000 倫敦藝術大學藝術系畢業；2003 年取得倫敦大學藝術政策與管理的碩士學位，更於英國、美國、上海、台灣及香港多次舉辦個人展覽。

Mediha Ting

Artist Mediha Ting is a Belgian born artist who grew up in Hong Kong in a Taiwanese-Muslim household. She later received her higher education in the United States and England, at institutions including the University of the Arts London (Byam Shaw). After twenty years of working in the art world in London she returned to Hong Kong. Consequently, her art speaks with a unique angle of multi-culturalism, and has been described as “embodying a powerful feminine spiritual energy.”

Ting’s diverse background and upbringing along with her overseas experiences nudge her to examine perceptions of cultural identity, the interplay of relationships between one’s inner world, the urban environment in relation to the natural environment, and states of consciousness and the subconscious.



30 x 40.5 cm | 2017 | MEA051 | Acrylic and Chinese ink on Canvas

Golden Carpi Blue

Ray of Light

Mediha Ting's latest series, titled Ray of Light, employs her signature techniques of layering and juxtaposition of the abstract and figurative on the same canvas. From afar, one can view the first layer on the canvas: color stains in abstract gestures. On a closer look, there are detailed intricacies on subsequent layers. Following that is a print utilizing Chinese ink, illustrating Hong Kong's skyline in panorama format. Additionally, there are hints of oriental characters laid on by peeling plastic off character transcriptions. Finally, Ting sets rays of luminescent colour around the figures on the canvas, which morph into different shades based on the viewer's use of natural light. These levels of content provide much richness and complexity to the works.

Common across the series is the focus on what Ting describes as "spiritual light" – the provision of light and love to be shared by all religions. This reflects Ting's Muslim background combined with her Catholic education and keen interest in Buddhism. The theme promotes the notions of love and healing as opposed to division and differences. On this note, there are references to the Diamond Sutra, a Mahayana sutra which is an object of devotion in Zen Buddhism. Also shared amongst the works are the aforementioned figures of maps from the site of the Umbrella Movement, allowing the viewers to interpret Ting's local heritage.

This series, Ray of Light, is a glorious reflection of Ting's varied background and her diverse, mixed philosophy.



38 x 33 cm | 2017 | MEA050 | Acrylic and Chinese ink on Canvas

Cobalt Peridot

37 x 29.5 cm | 2017 | MEA045 | Acrylic and Chinese ink on Canvas

Citrine Sunrise



122 x 76 cm | 2017 | MEA040 | Acrylic and Chinese ink on Canvas

Gold and Orange Echo





76 x 122 cm | 2017 | MEA043 | Acrylic and Chinese ink on Canvas

Blue Sapphire



37 x 29.5 cm | 2017 | MEA046 | Acrylic and Chinese ink on Canvas

Opal City



39.5 x 38 cm | 2017 | MEA047 | Acrylic and Chinese ink on Canvas

Halcyon Coast



Albert Chung

Mobile / Whatsapp: +852 9646 6686 WeChat: albert_929

Raymond Cheng

Mobile / Whatsapp: +852 9275 0028 WeChat: raymondcheng3

info.blinkgalleryhk@gmail.com

www.blinkgalleryhk.com