



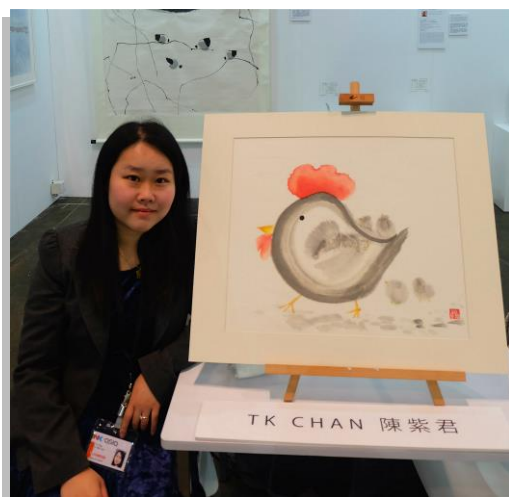
WORLD OF LOVE

by TK Chan

齊亮畫廊
BLINK GALLERY

陳紫君（香港，1984 - ）

一直以來，中國人非常重視家庭，而傳統家庭觀念慢慢亦在現今社會改變，陳紫君小姐運用墨的七個色調和畫油畫的技巧，以圓形為基礎，描繪出憨態可掬的動物形象。紫君希望透過她的動物家庭系列作品，把 "家" 的傳統重新帶回家！她亦認為所有生命都是珍貴的，鼓勵領養動物。此外，紫君筆下的小動物跳脫可愛，如人類一般有喜怒哀樂，令觀眾產生共鳴。陳紫君小姐 (TK Chan) 在香港長大，在學時期到了蘇格蘭發展 10 年。2008 年畢業於英國愛丁堡著名學府 (Edinburgh Napier University) 設計系碩士。其作品曾於英國倫敦、愛丁堡及威爾士、香港、新加坡、韓國、雅加達等多個地方展出，大受各地收藏家歡迎。2013 年 3 月，陳紫君小姐與鍾臻智先生合作成立了香港齊亮畫廊 (BLINK Gallery)。陳紫君小姐現為蘇格蘭藝術家協會、香港聖安德魯社團、香港美術教育協會、The Hong Kong Highlanders 的會員。2017 年，陳小姐更入圍由英國文化協會舉辦的「英國傑出校友獎」。近年，她的水墨近作「雄雞家族和開心小狗」在新加坡三十三拍賣會 (33 Auction) 成功拍賣售出。陳小姐也是 2017-2018 保良局 V54 駐留藝術家之一。



TK Chan (Hong Kong, b.1984)

TK Chan began her Chinese ink painting series in winter 2016 under the encouragement and guidance of established artist POON Kwing Wing (Water POON). Inspired by the round cuteness of her own pet animals, she sought to capture these lively qualities with the movement of her ink brush and the colour ink wash of her images. Her animal paintings have been described as embodying happy feelings of love and caring. All life was precious; that we need to treasure life, every little bit of it, including not abandoning or killing sick animals & ourselves not succumbing to thoughts of hopelessness & suicide. It meant seeing new beauty in adopting & nurturing our pets. In this Animal Family Collection, she wished to convey that Home is one of the important element in Chinese Society since ancient time. In TK's collection you can find: Children are nurtured, Adults are supported to contribute, Elderly are cared for.

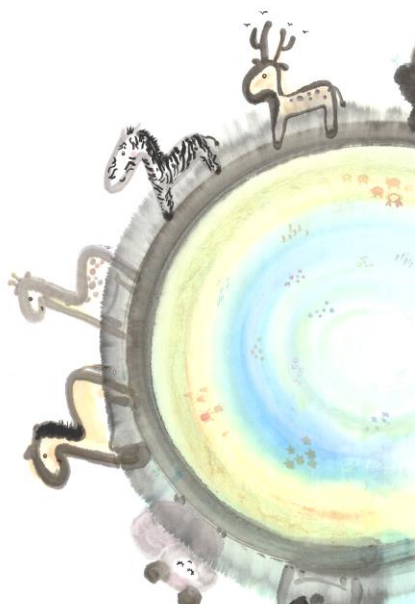
This animal collection was first shown at INK ASIA art fair in December 2016 in Hong Kong where her fresh contemporary ink style, received much attention from the local media & from established Chinese ink painters. In 2017 she was one of the finalists for the Finalist of the Entrepreneurial Award, Alumni Awards 2017 - organized by the British Council, Hong Kong. Her painting 'Rooster Family and Happy Dog' were selected at 33 Auction, Singapore in 2017 and 2018

E-mail - blinkgalleryhk@gmail.com

Whatsapp - (852) 5112 9521

WORLD OF LOVE

愛地球・愛動物



宣揚 “愛動物、尊重生命、不棄養”

陳紫君小姐作品以珍惜生命愛護地球為目的，以探索地球、人類和動物之間的愛來表達和諧共存。

“愛地球 • 愛動物”系列，靈感來自於世界地球日，在這天不同國籍的人們以不同的方式宣傳和實踐環境保護的觀念。陳紫君小姐以珍惜生命愛護地球為目的，希望藉這系列鼓勵人們多吃蔬果少吃動物，愛食物惜地球，關注地球暖化。她的作品有著各種不同的動物家庭和種族的人，甚至有魚類及小鳥一起共融地住在地球裡。

"World of Love" is local artist Ms TK Chan's latest ink collection inspired by Earth Day. It is about the love, balance and harmony between mother Earth, humans and animals.

In the World of Love collection, you may see animals with their families, people with different nationalities, and even fishes and birds can be found in this new collection, like in a perfectly harmonious world. The artist would like to raise awareness of global warming and encourage people to eat vegetables instead of meat.

The many circles in the painting represent the different people and animals living together on the Earth. And the Four-Leaf Clover is a symbol of Love, Health, Glory and Riches.



68 x 68 cm | 2018 | Ink and Color on Paper 水墨設色紙本
Love in Scotland 愛在蘇格蘭

大家坐在地上圍在一起，聚首一堂，一起唱歌跳舞。

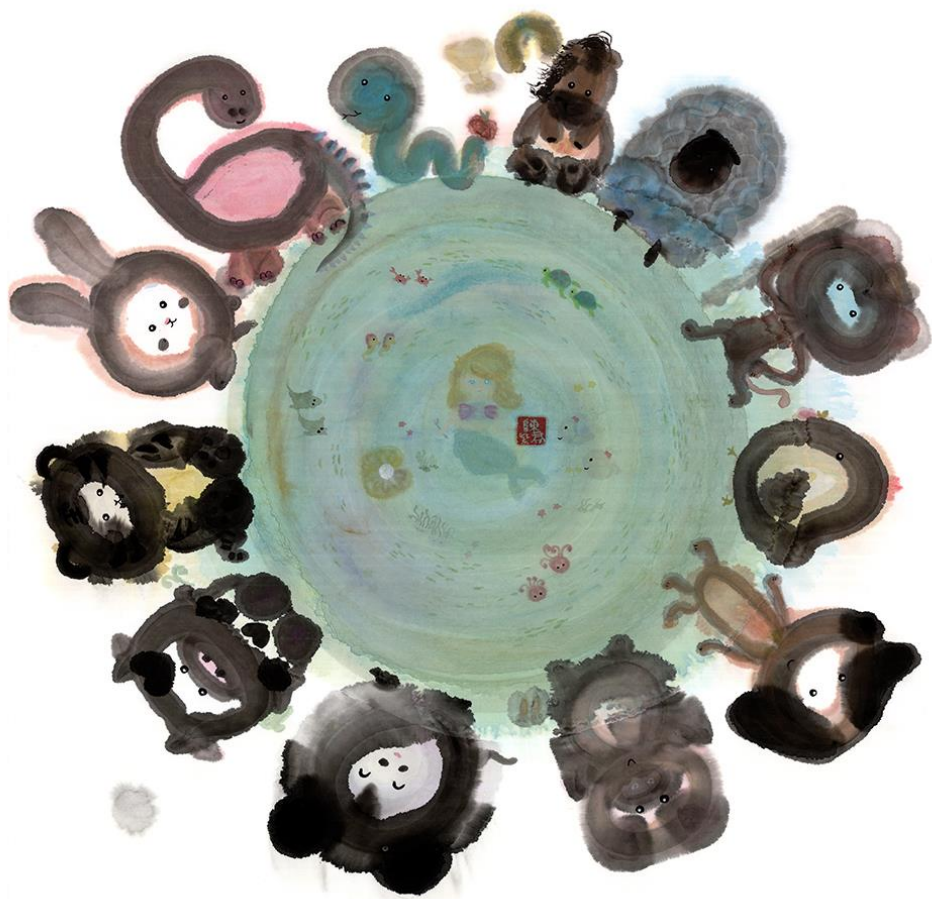
這個圓圈就是一個和平的表象。



69 x 69 cm | 2018 | Ink and Color on Paper 水墨設色紙本

Love Our Planet 愛地球

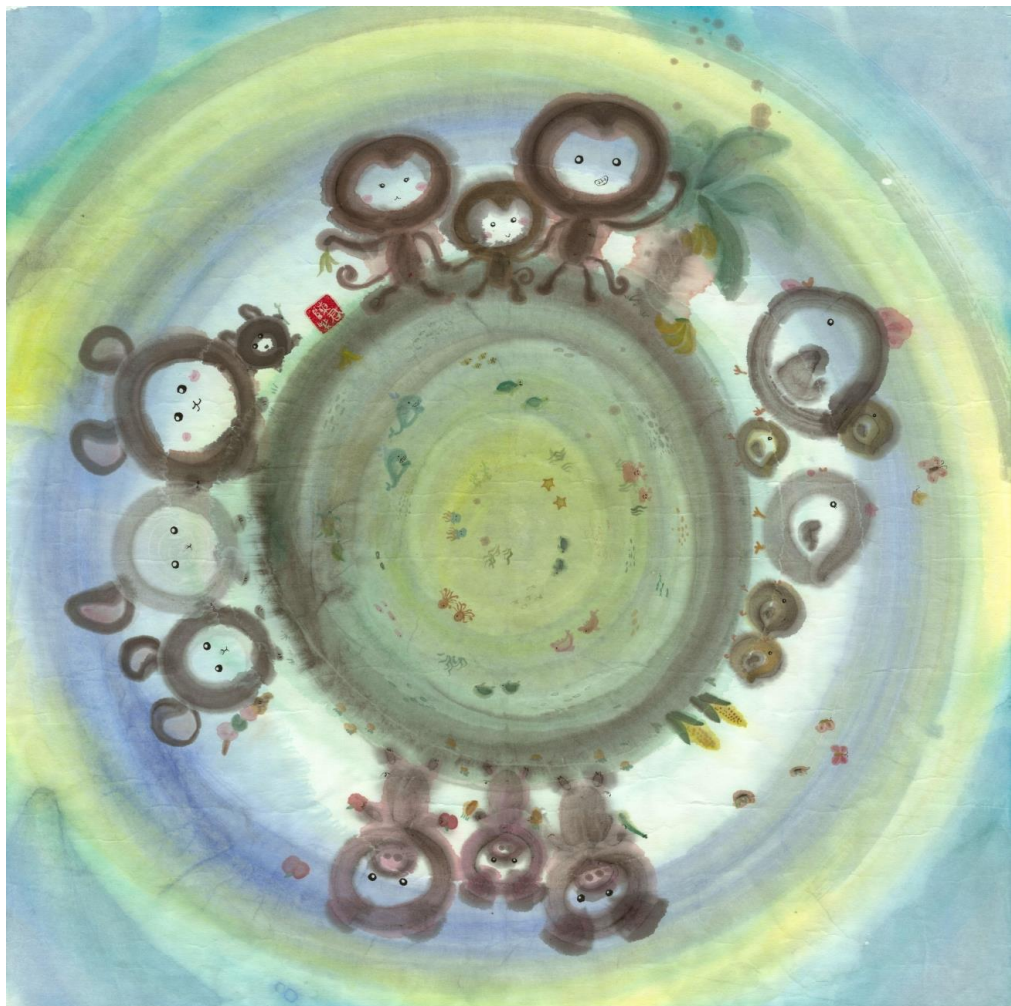
少紅肉也是愛地球的表現，能夠減低地球暖化。



65 x 65 cm | 2018 | Ink and Color on Paper 水墨設色紙本
Zodiac Animals 甲子園

中國傳統農曆干支的一個循環稱為「甲子」。

不斷循環共渡喜悅。



69 x 69 cm | 2018 | Ink and Color on Paper 水墨設色紙本
World Of Love 愛地球・愛動物

一家人齊齊整整，開開心心地生活，足矣！



70 x 140 cm | 2018 | Ink and Color on Paper 水墨設色紙本

Happy Farm 快樂農莊

農莊內溫馨滿溢，和諧共處，大家所尋找的一個新天地。



33 x 33 cm | 2018 | Ink and Color on Paper 水墨設色紙本

We Are Friends Not Food ! 無我•食譜

I'm not BACON!



33 x 33 cm | 2018 | Ink and Color on Paper 水墨設色紙本

I' m not BACON ! 非燻肉也



33 x 33 cm | 2018 | Ink and Color on Paper 水墨設色紙本

GO Vegan 我行我素



33 x 33 cm | 2018 | Ink and Color on Paper 水墨設色紙本

I' m not roast suckling pig! 燒乳豬... TOT



www.blinkgalleryhk.com
info.blinkgalleryhk@gmail.com

Albert Chung
Mobile / Whatsapp: +852 9646 6686
WeChat: albert_929

TK Chan
Mobile / Whatsapp: +852 5112 9521